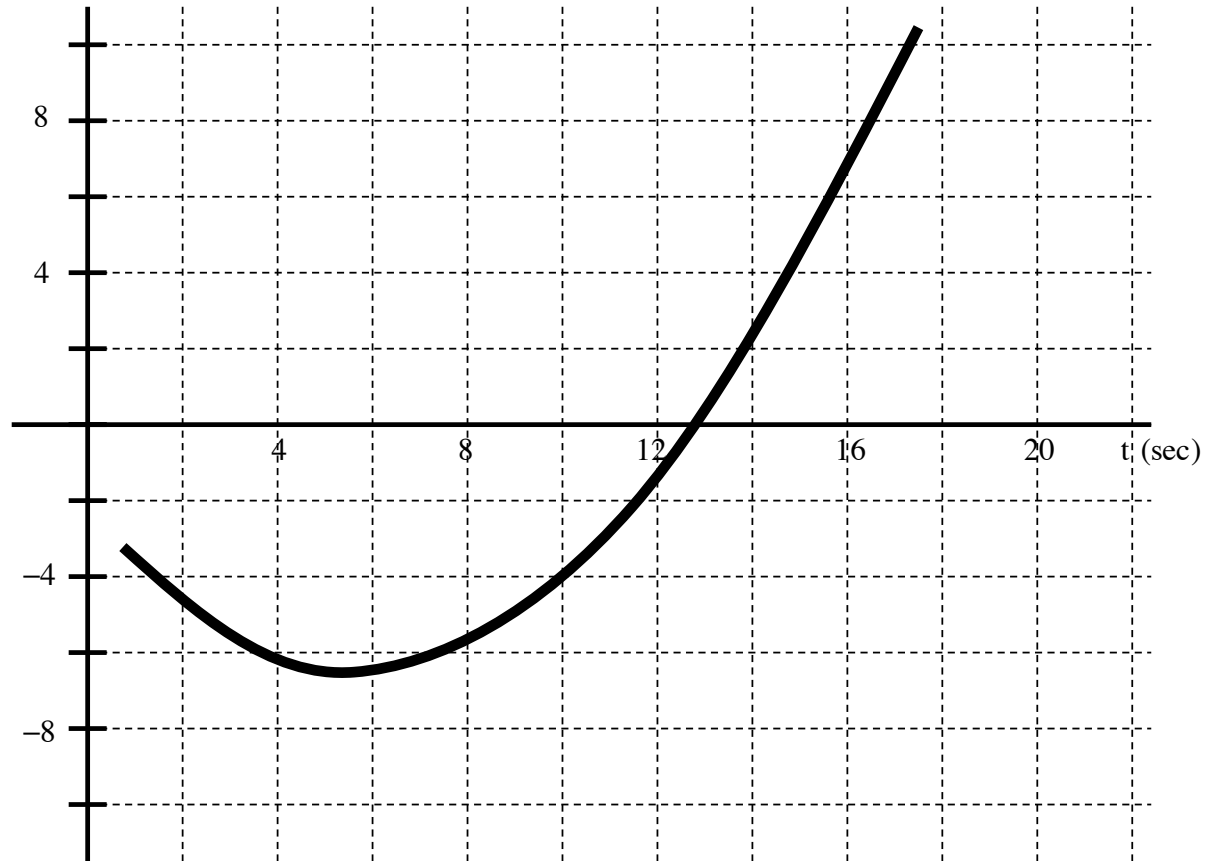


# SOURCES OF INFORMATION OFF A GRAPH!

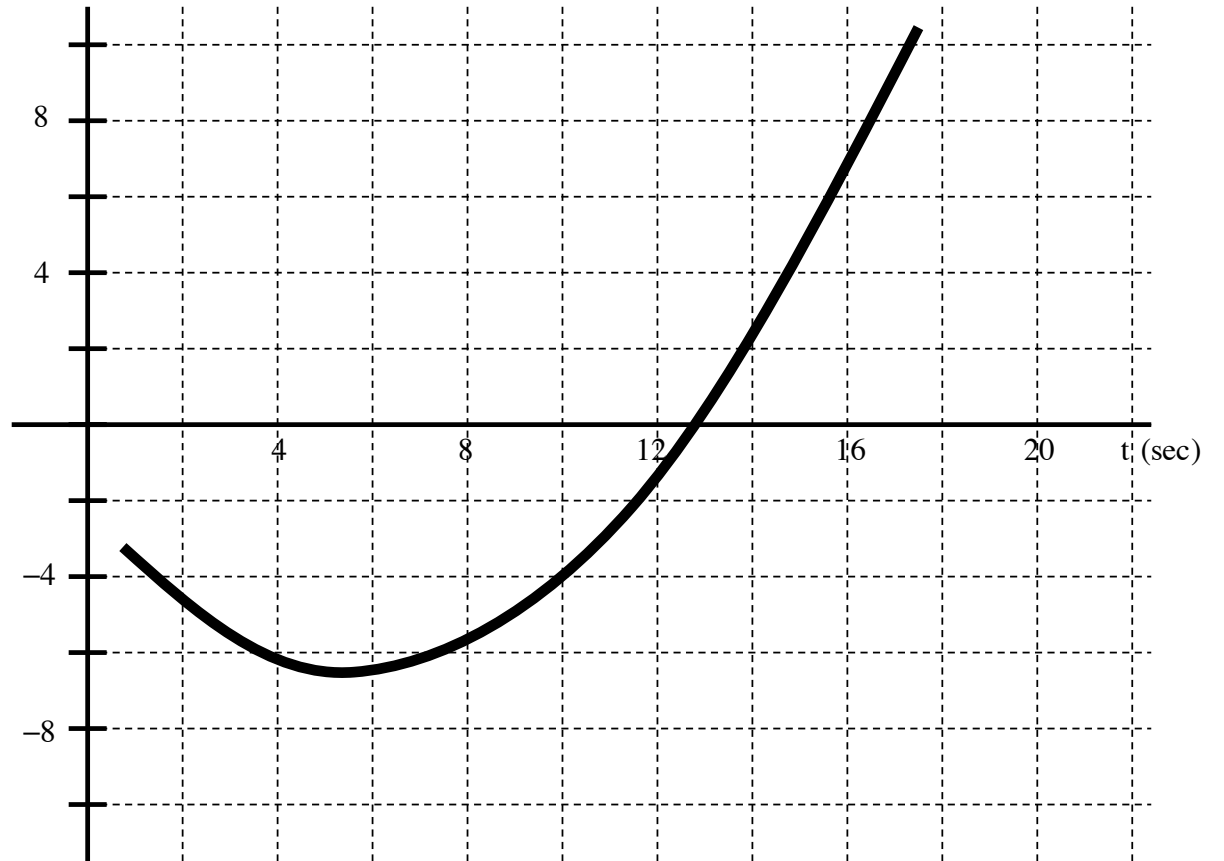
I.) Take data straight off;



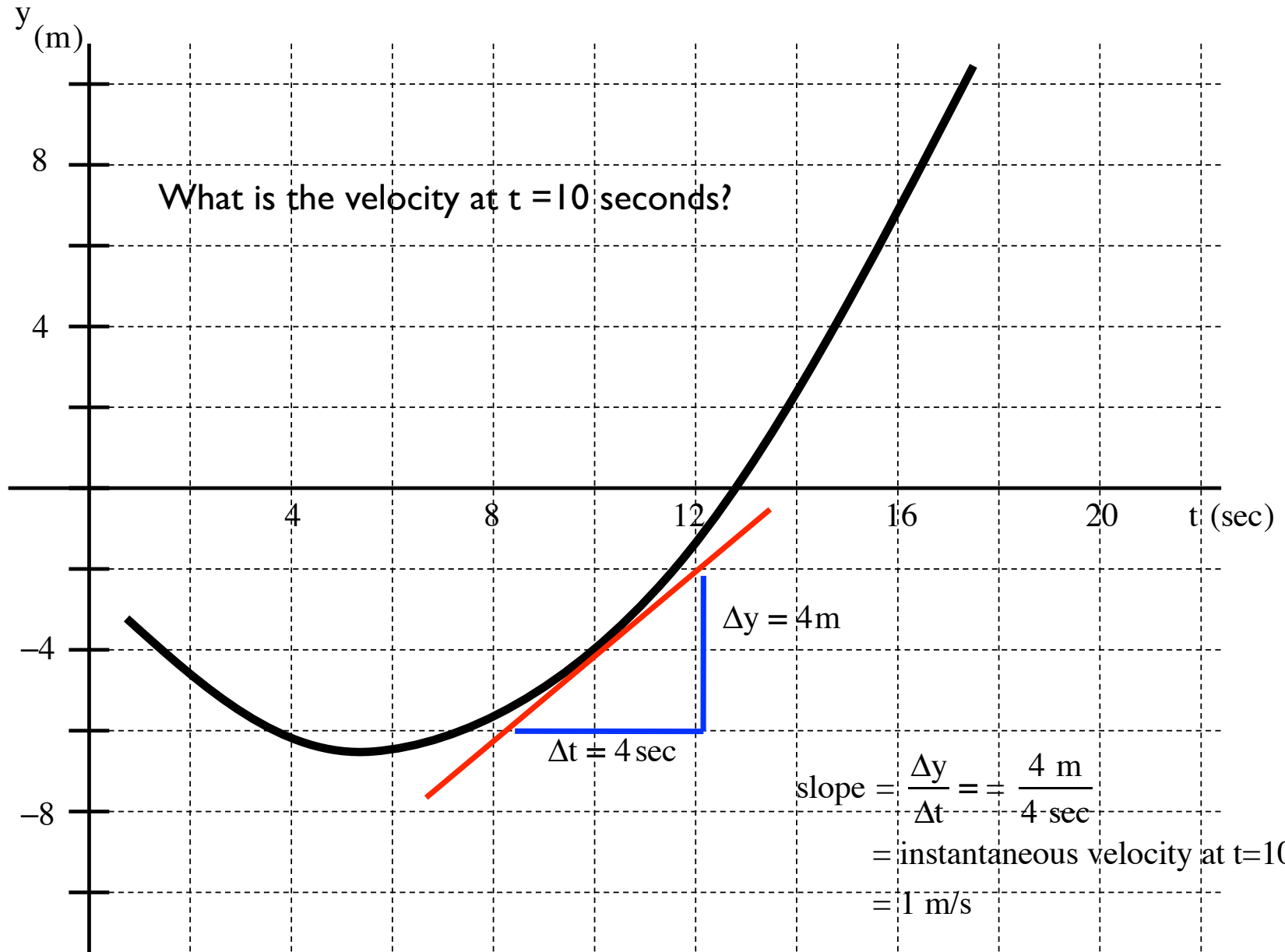
## SOURCES OF INFORMATION OFF A GRAPH!

1.) Take data straight off;

2.) Look at the slope and it changes;



# SLOPE OF THE GRAPH!

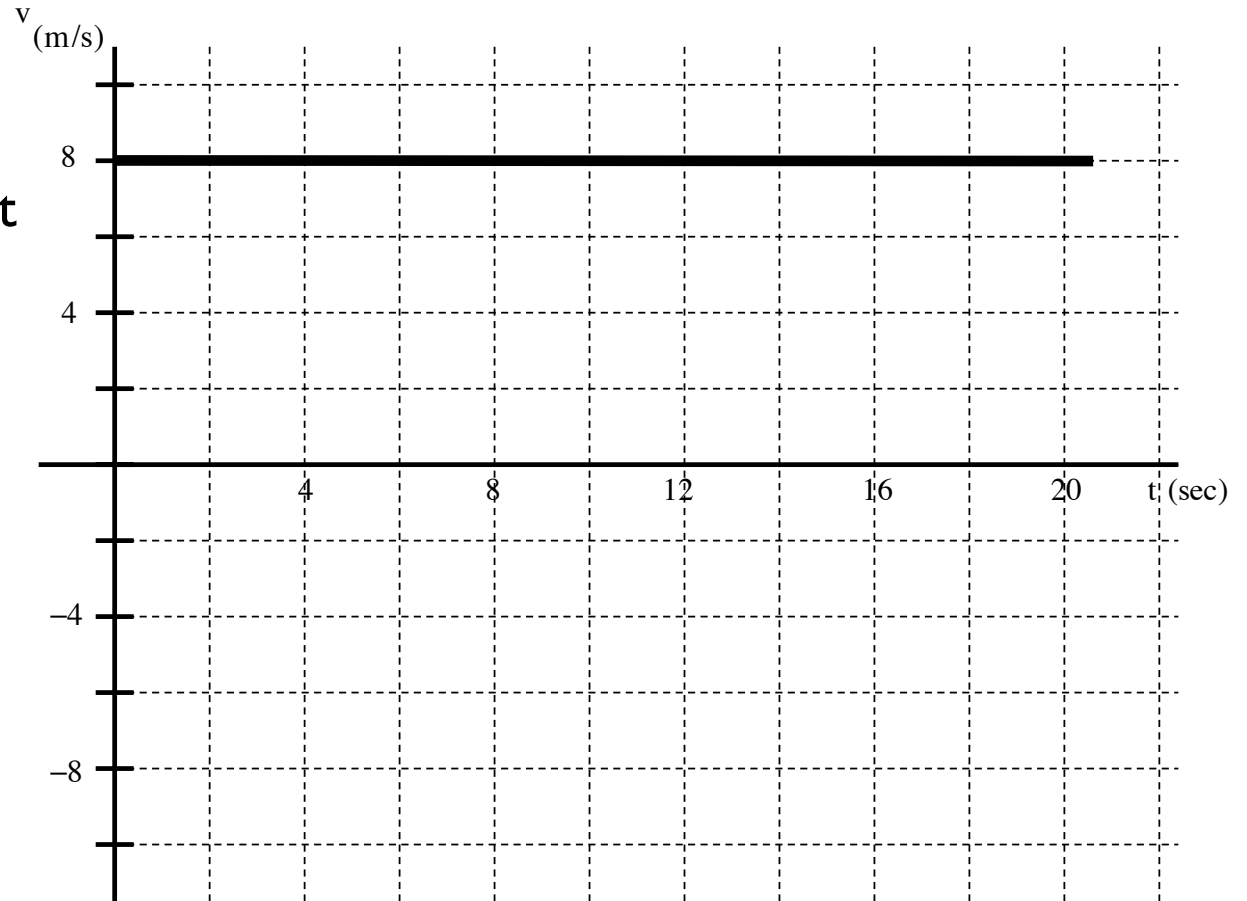


## SOURCES OF INFORMATION OFF A GRAPH!

1.) Take data straight off;

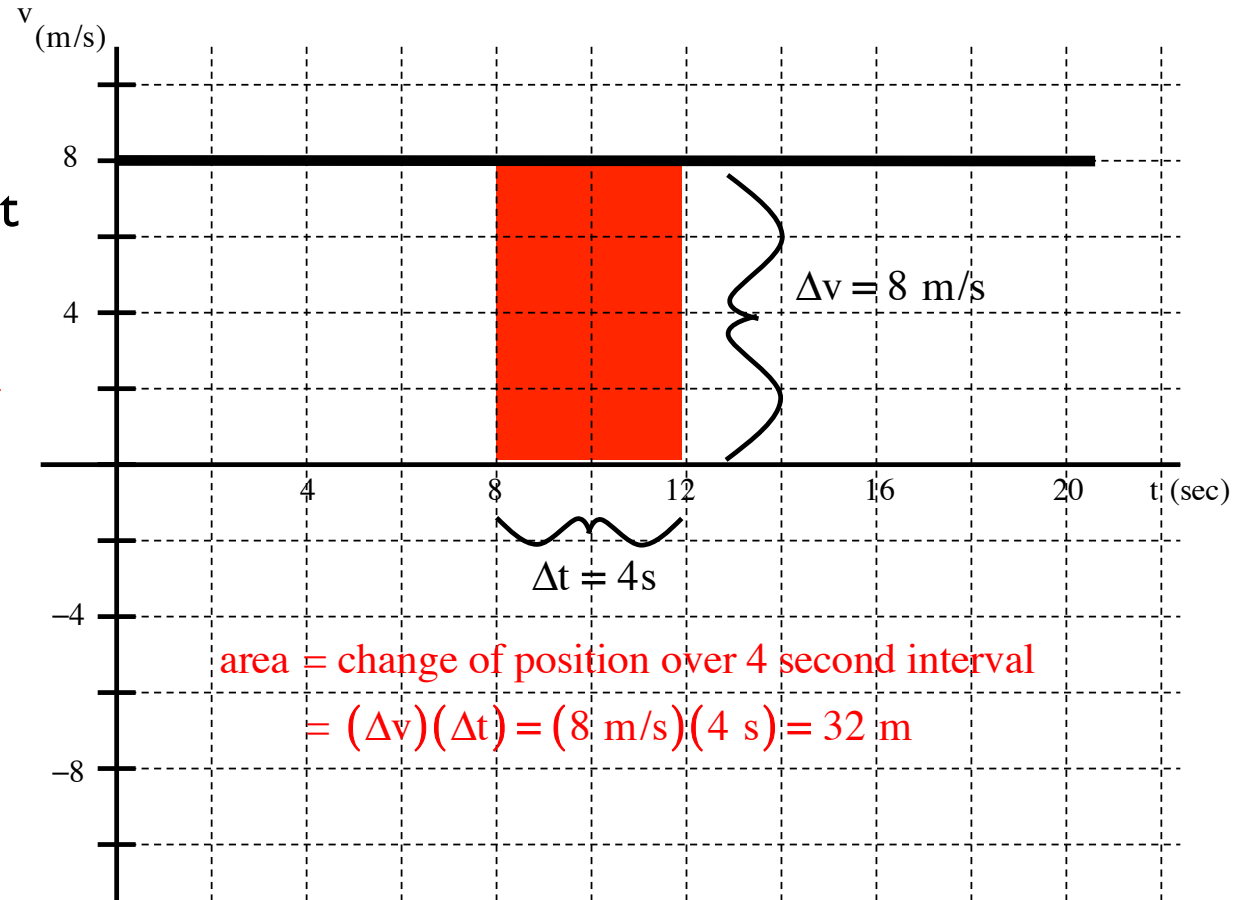
2.) Look at the slope and it changes;

3.) Look at the area under curve.



## SOURCES OF INFORMATION OFF A GRAPH!

- 1.) Take data straight off;
- 2.) Look at the slope and it changes;
- 3.) Look at the area under curve.

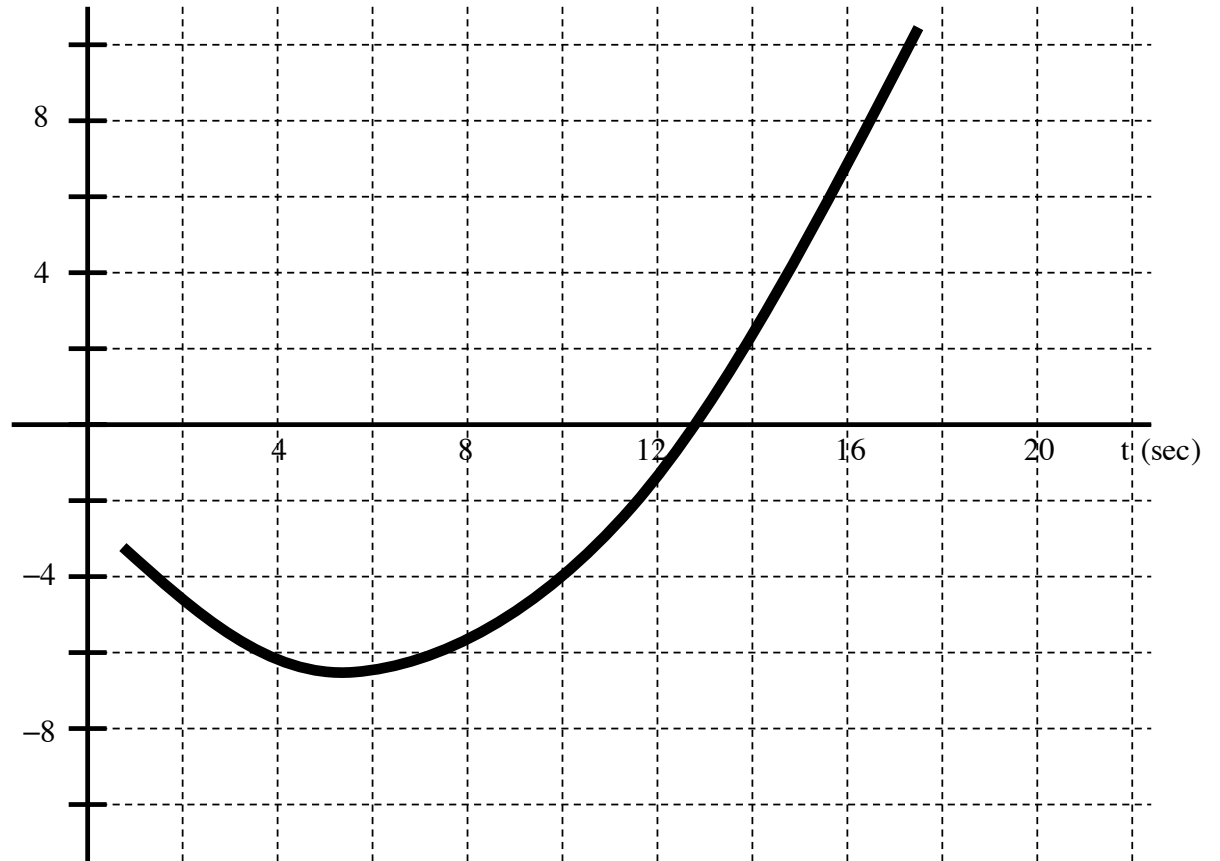


Area under an “v. vs t” graph yields net position change over a time interval

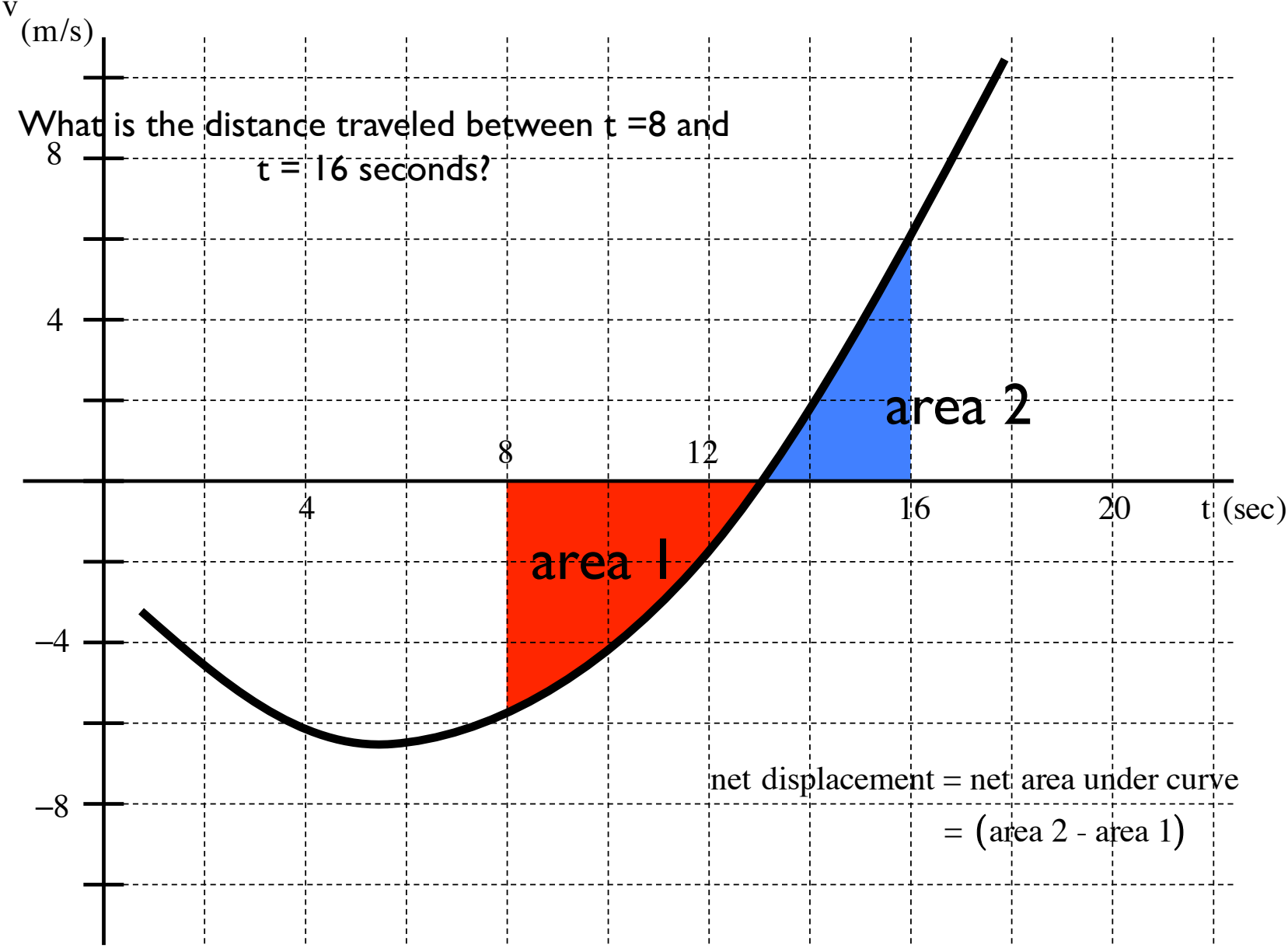
Area under a “a. vs t” graph yields net velocity change over a time interval

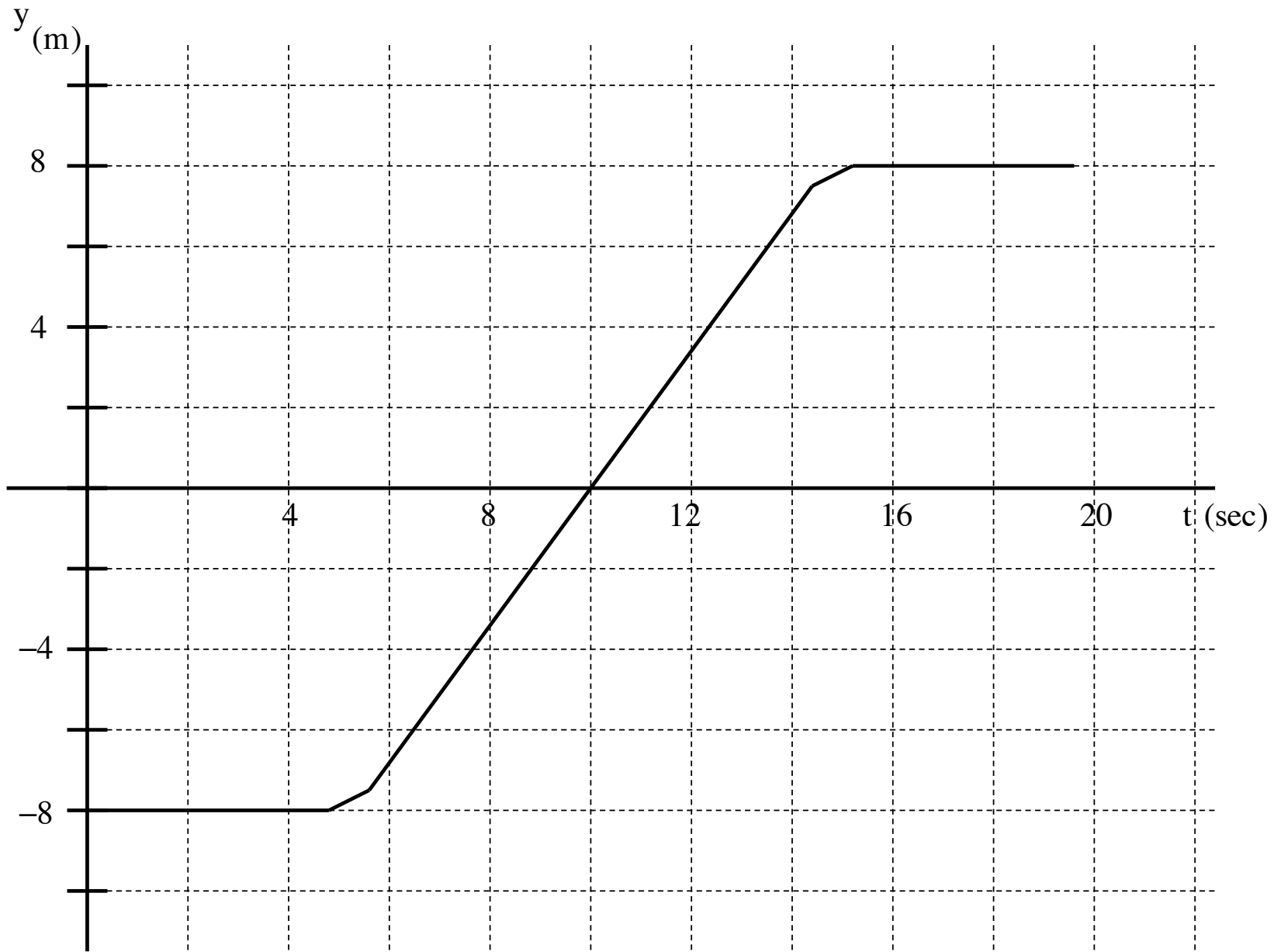
## SOURCES OF INFORMATION OFF A GRAPH!

- 1.) Take data straight off;
- 2.) Look at the slope and it changes;
- 3.) Look at the area under curve.



# AREA UNDER THE GRAPH!







I.) As *position versus time* graph:

